



Let There Be Night

Student Leadership Team
December 13, 2008

**Why are we
doing this?**

Madison
oration
2.in.us

(K-12)
Madison, IN 46545
Voice Mail 258-7961

School/
Madison, IN 46545

(K-5)
y School
Madison, IN 46546
ice Mail 254-2815

School/
y 46546
ice Mail 254-2820

y School
p, IN 46545
ice Mail 254-2823

chool
n, IN 46530
ice Mail 254-2824

chool
n, IN 46573
ice Mail 254-2816

School
y 46530
ice Mail 254-2821

ary School
y 46530
ice Mail 254-2813

ool
y 46541
ice Mail 234-2822

School
y 46530
ice Mail 254-2812

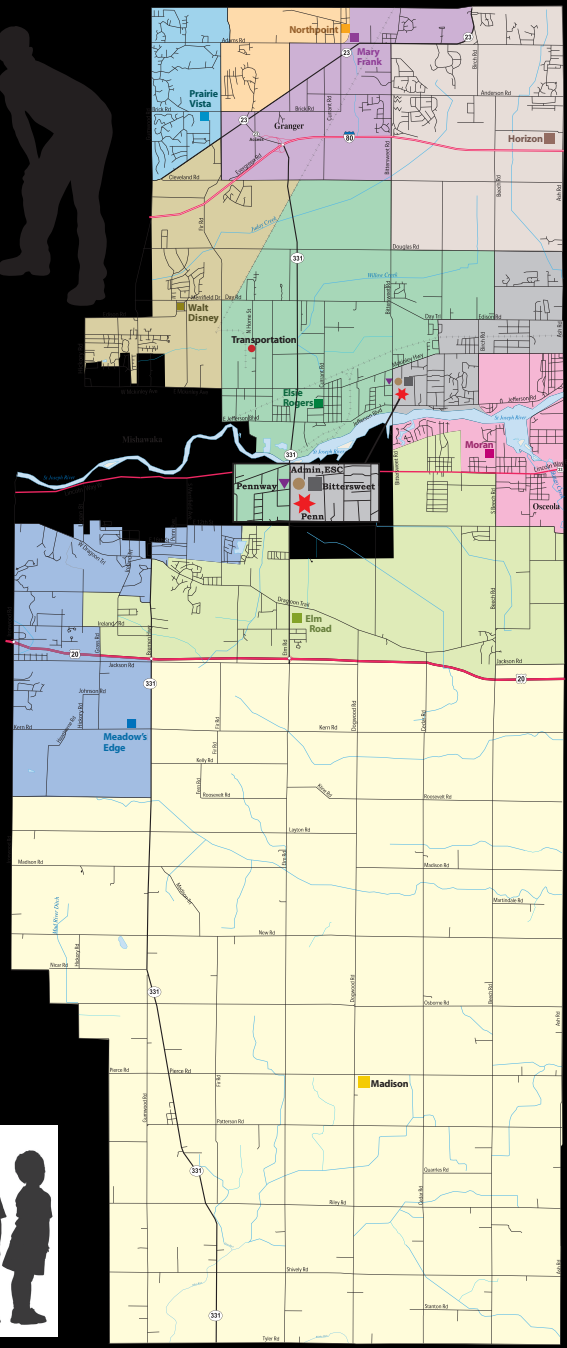
y School
y 46530
ice Mail 254-2825

y School
p, IN 46545
ice Mail 254-2826

enter (ESC)
Madison, IN 46545

Madison, IN 46545

ance areas or
call 574-258-9558
k12.in.us



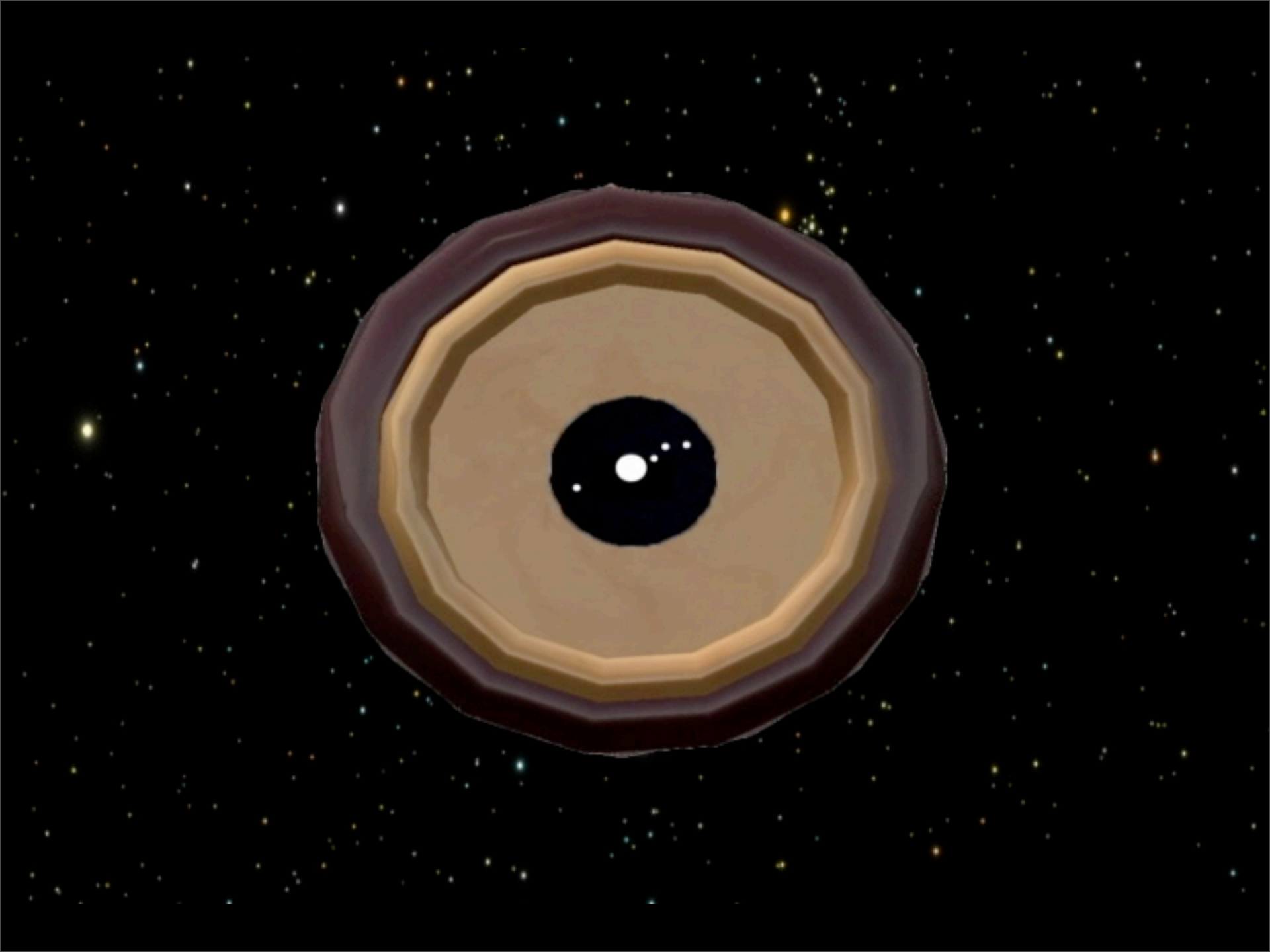
Why are we doing this?



THE UNIVERSE
YOURS TO DISCOVER

INTERNATIONAL YEAR OF
ASTRONOMY
2009









Glare





Light Trespass





Sky Glow



Why Should I Care?



Why Should I Care?



Money

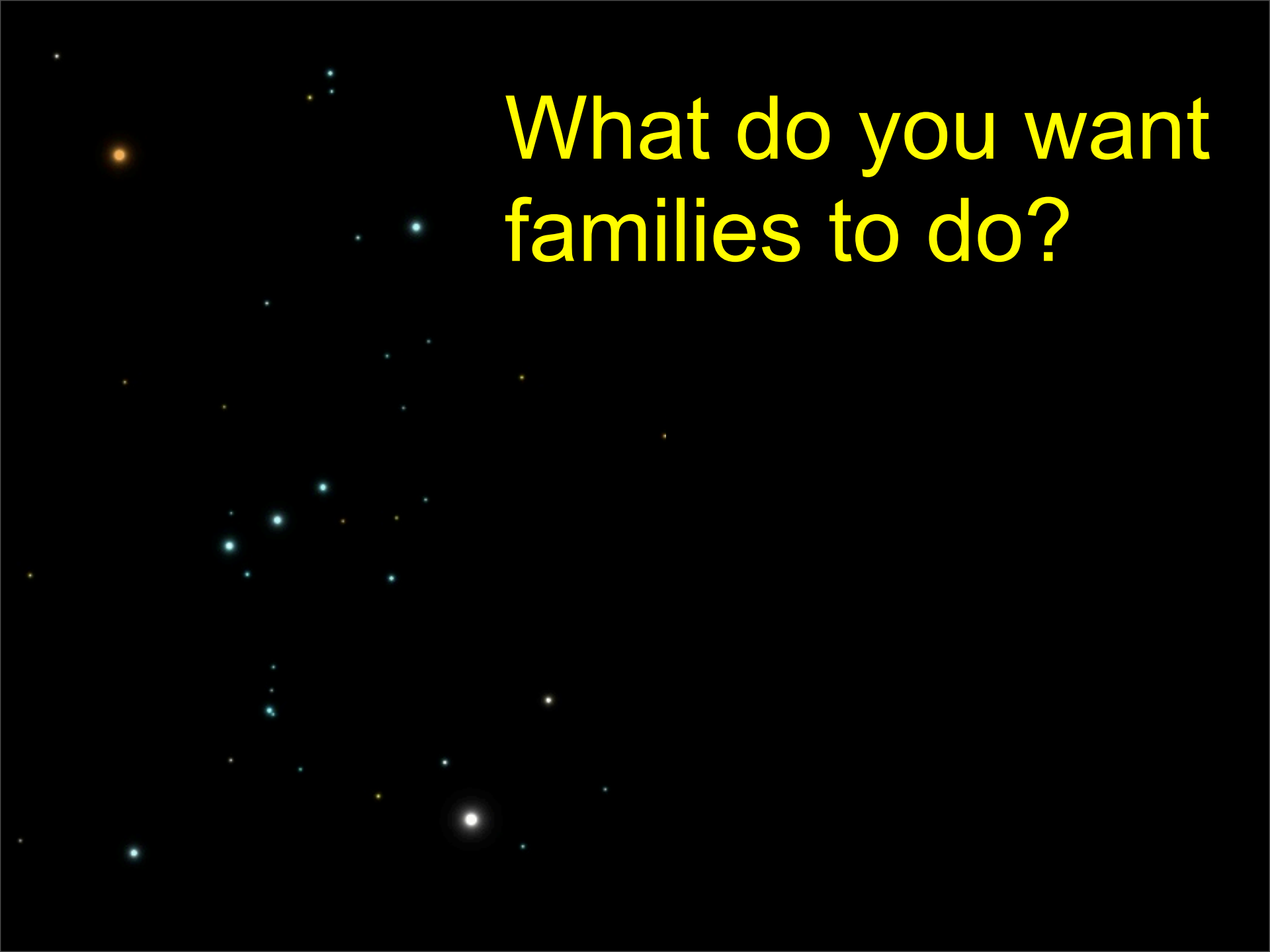
Energy

Safety and Security

Natural Habitats

Night Sky

Human Health



What do you want
families to do?

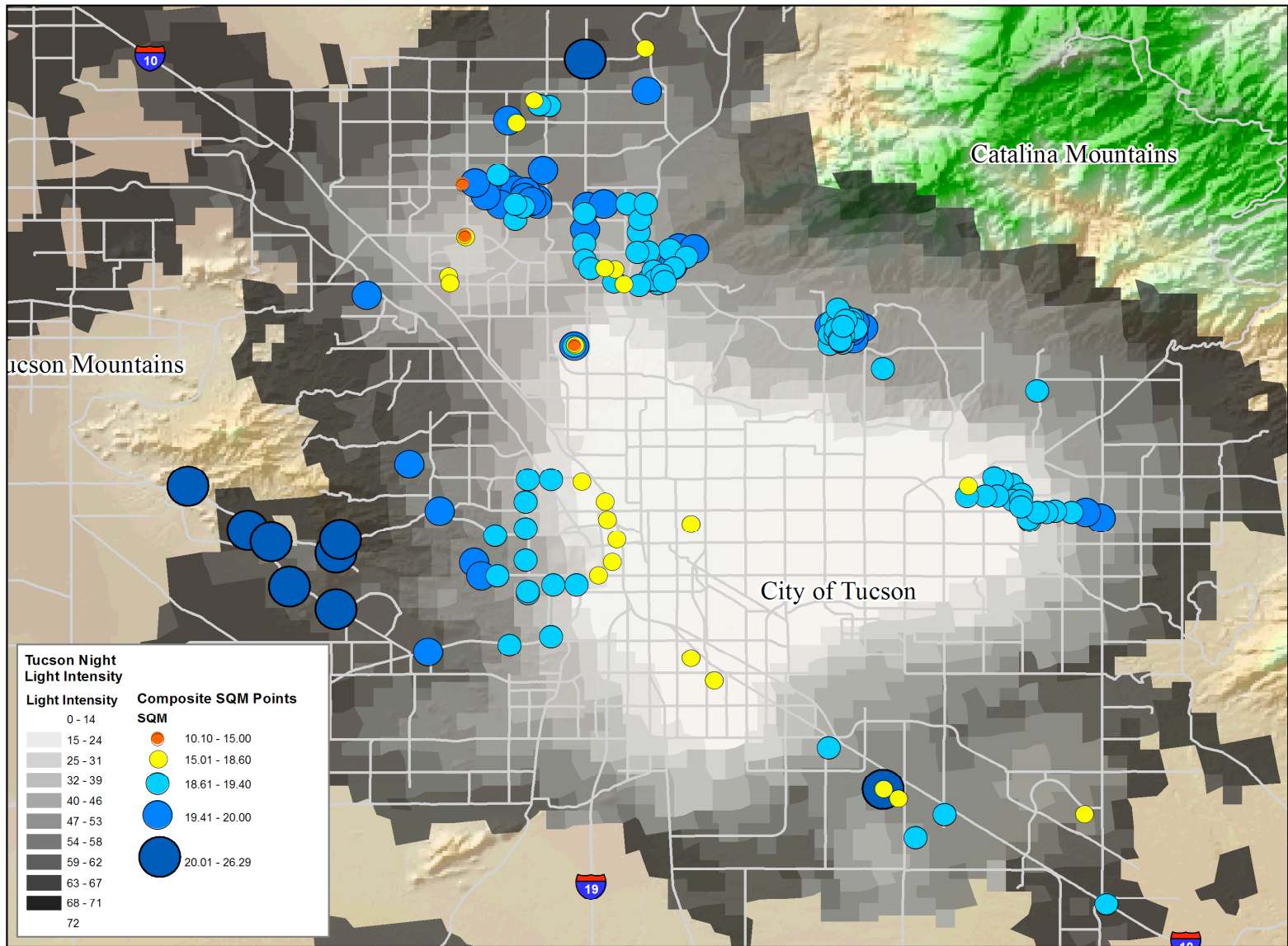
What do you want families to do?

Select the latitude closest to your location: [40 deg S](#) | [20 deg S](#) | [Equator](#) | [20 deg N](#) | [40 deg N](#) | [60 deg N](#)

		
Cloudy Sky	Magnitude 1 Chart	Magnitude 2 Chart
		
Magnitude 3 Chart	Magnitude 4 Chart	Magnitude 5 Chart
		
Magnitude 6 Chart	Magnitude 7 Chart	

What do you want families to do?



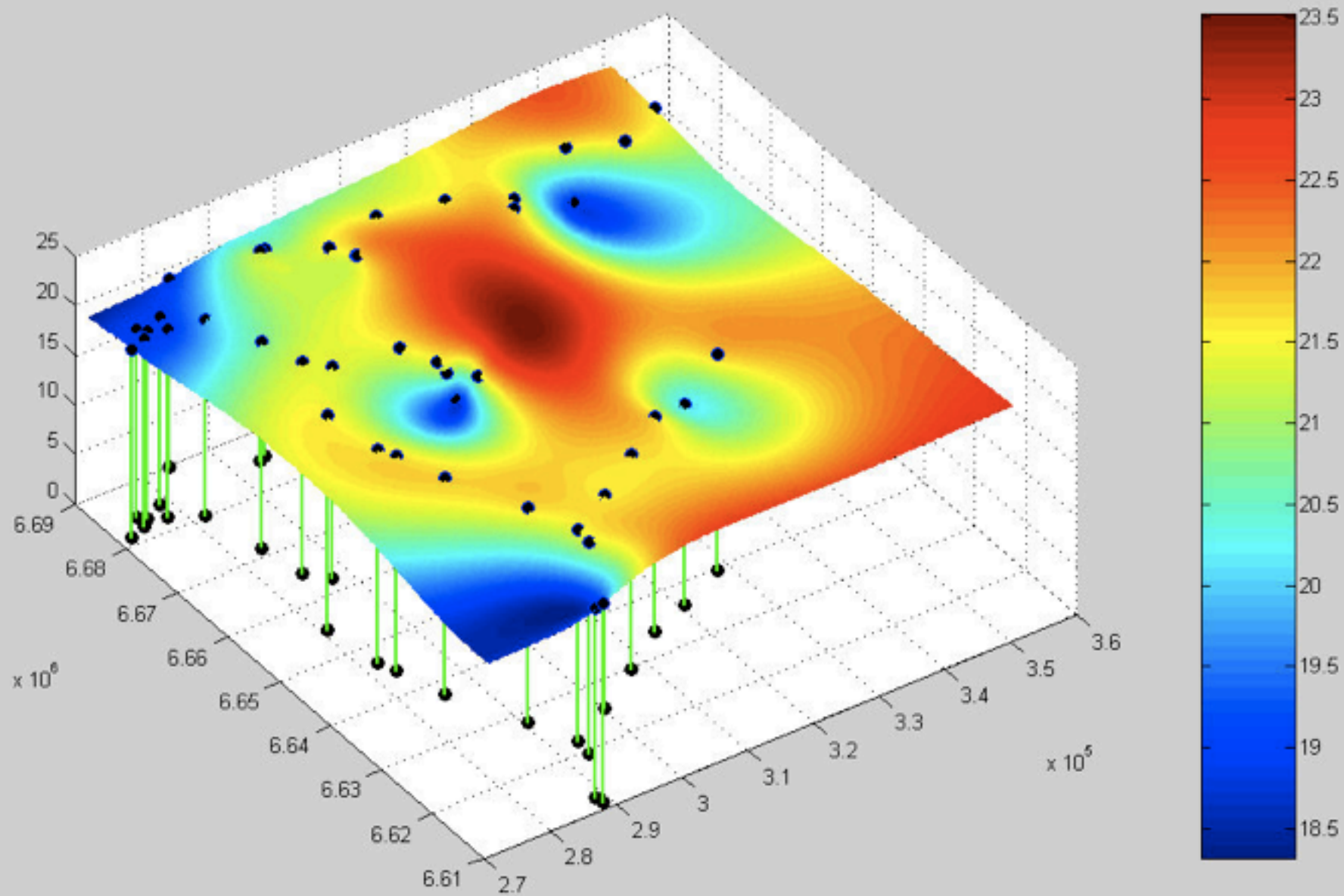


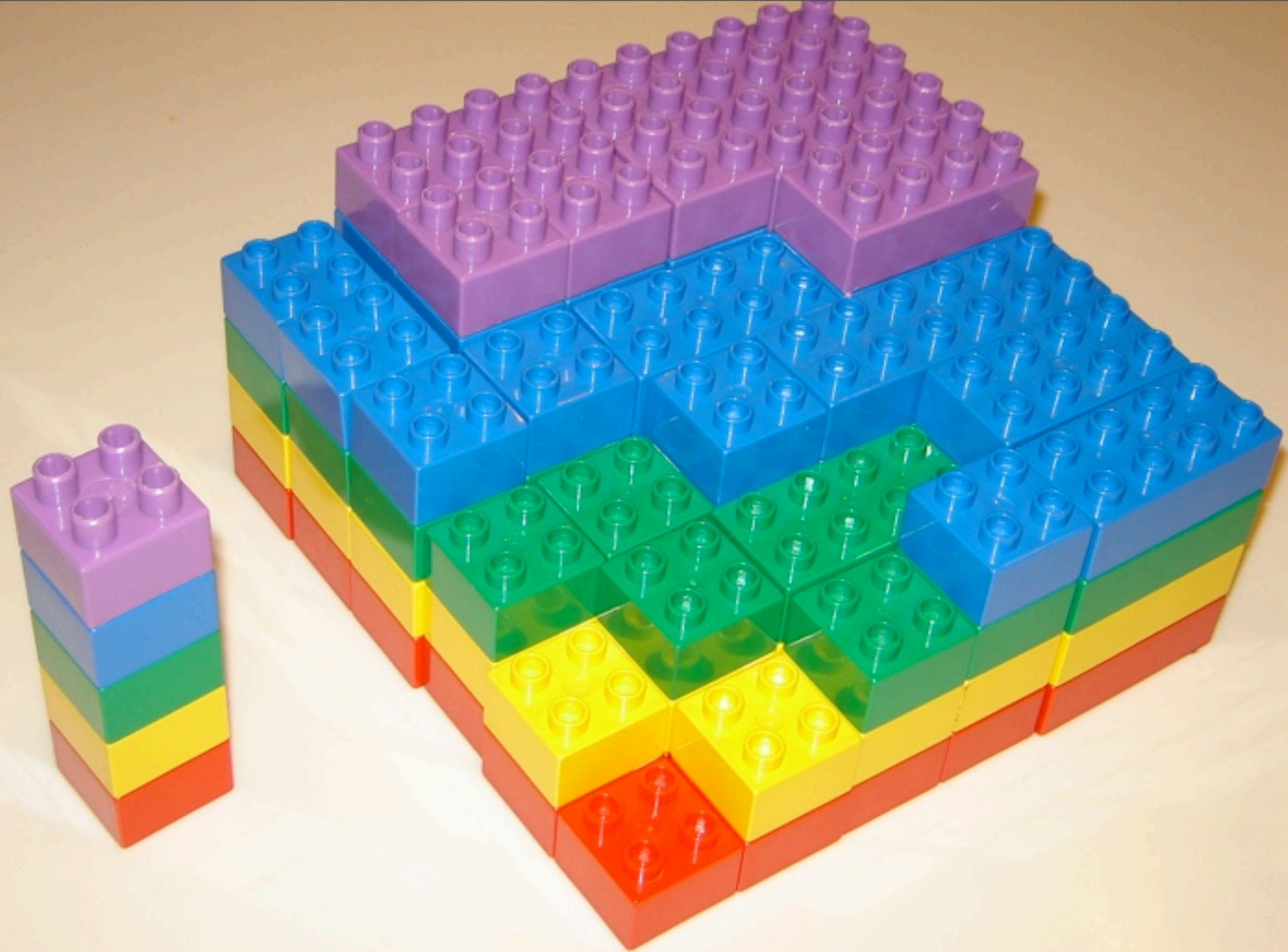


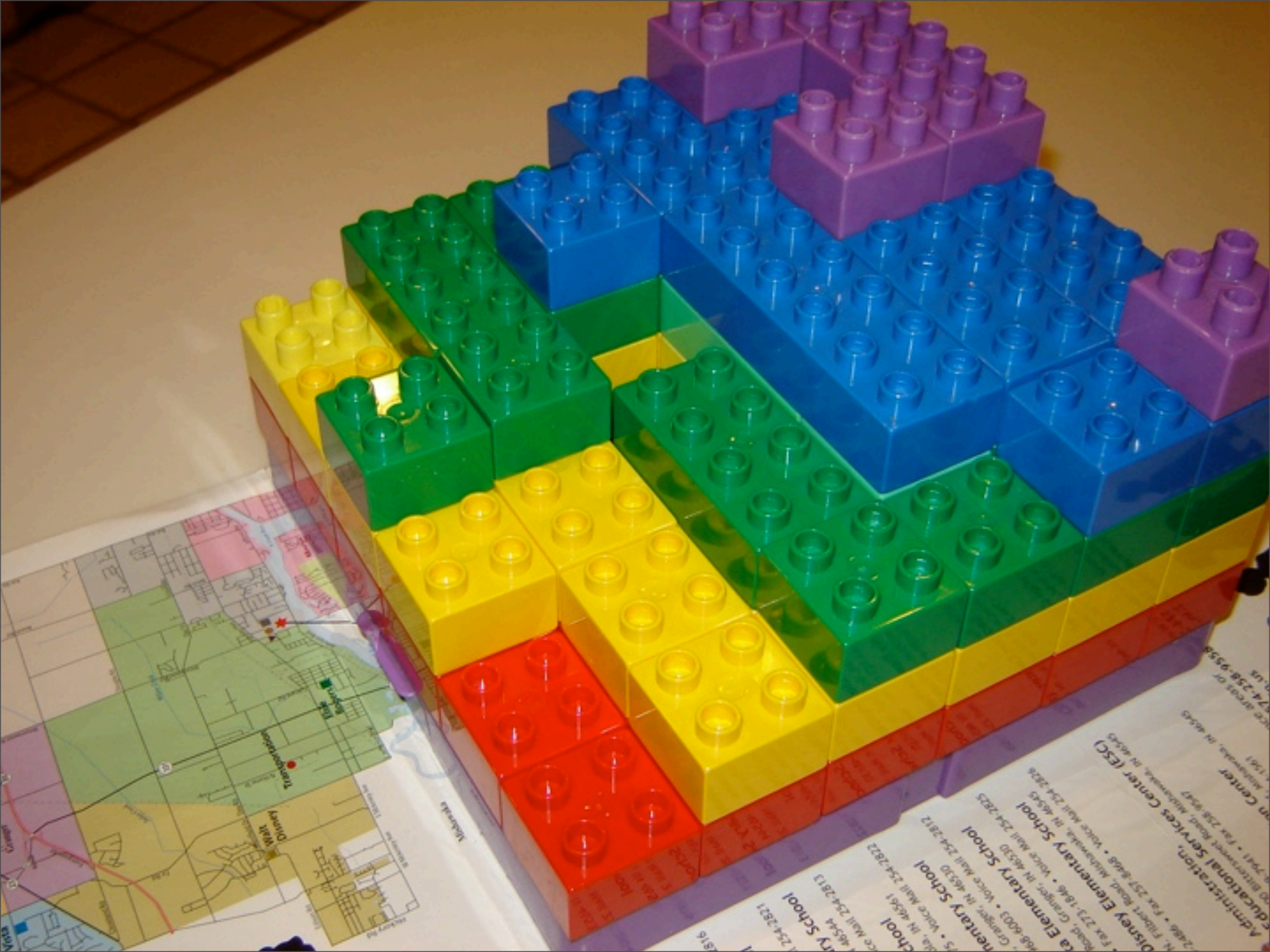
ter. 30°15'39.33" S 70°53'40.44" W

Image © 2008 DigitalGlobe
© 2008 Europa Technologies
© 2008 LeadDog Consulting
Map data © 2008 DMapas/El Mercurio
Streaming 100%

Google
Elev. alt. 129.15







Disney Elementary School Center (ESC)
1468-0003 • Voice Mail 254-2825
Road, Granger, IN 46530
Fax 253-1846 • Voice Mail 254-2825

Administrational Services Center (ESC)
1468-0003 • Voice Mail 254-2825
Road, Granger, IN 46530
Fax 253-1846 • Voice Mail 254-2825

Administrational Services Center (ESC)
1468-0003 • Voice Mail 254-2825
Road, Granger, IN 46530
Fax 253-1846 • Voice Mail 254-2825

Administrational Services Center (ESC)
1468-0003 • Voice Mail 254-2825
Road, Granger, IN 46530
Fax 253-1846 • Voice Mail 254-2825





LET THERE BE NIGHT.com

Disc #1



Let There Be Night

Stars Above, Earth Below

Dark Matters



DVD Courtesy of
JORDAN TOYOTA
and
 J.O.H.M.
EDUCATIONAL
FOUNDATION

LET THERE BE NIGHT.com

Disc #2



There Once Was a Sky Full of Stars

Saving the Night

Day & Night

DarkSkies

Using an SQM

Additional DVD data content
accessible with computer.

DVD Courtesy of
JORDAN TOYOTA
and
 J.O.H.M.
EDUCATIONAL
FOUNDATION

LetThereBeNight.com

[Home](#) [Year of Astronomy](#) [Team](#) [Planetariums](#) [Teachers](#) [PHM Families](#) [Supporters](#) [Site Map](#)

Student Leadership Teams

A team of students from each PHM school will lead the Let There Be Night program.

Correction: The first meeting of the Student Leadership Team will be on Saturday, December 13, 9:00-10:30 a.m., at the PHM Planetarium.

For directions, see www.transitofvenus.org/phm/directions.htm.

Dear Student Leadership Team Member,

Welcome to the team of students who will lead our community in carrying out the *Let There Be Night* program. I'm sorry we are launching with a correction to a misprint. We want to meet on **December 13 at 9:00 a.m.** in the [PHM Planetarium](#) to introduce students to the program, the issues, their roles, and optional activities. We'll also clarify the communication process so we hopefully don't have to make additional corrections like the one listed above.

Parents, when you drop your students off that Saturday morning, please stay for about 15 minutes. There isn't room for all students and parents in the planetarium, so Chuck Bueter will meet briefly with the parents in a nearby room to give you an overview as well. Chuck will then join the team in the planetarium, and parents can return to pick up their children at 10:30 a.m. For now it will be a simple dismissal (no coordinated scheme curbside), so you can be waiting in the parking lot or alongside the curb and hail your kid(s) from there. The foyer of Bittersweet School will be open, but not beyond the office doors.

So what the heck is this all about? Well, you'll have to wait until December 13 to get the full story. Just know that you were selected because your school teachers and principal thought you would be a responsible leader from your school who would have both an interest in this community-wide experiment and a

Highlights

Globe at Night:
Family Packet

Int'l Year of Astronomy

Light Shielding Demo

Globe at Night:
Paper Plate Activity

Nightwise for Kids!

PHM Planetarium



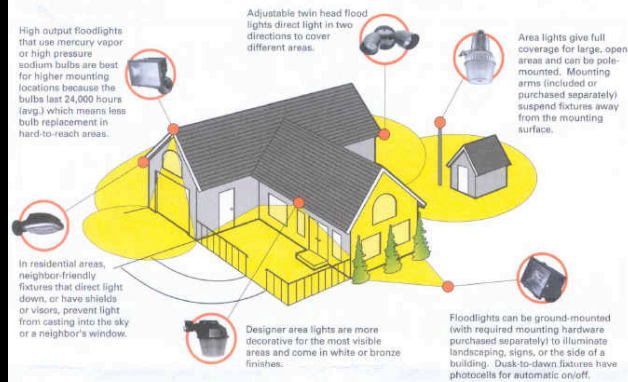


Other Opportunities

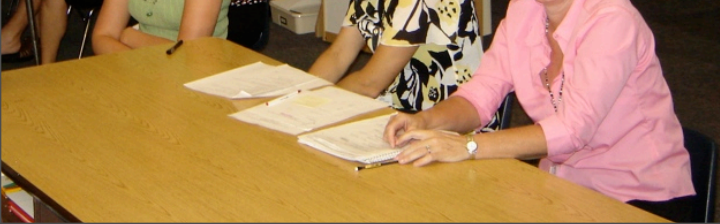


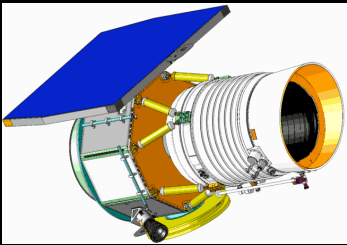
1 Identify Applications

Determine the areas around your home where you need additional light. For each area, determine which type of outdoor light fixture best fits your needs. Use the grid on the back to draw your plan.









Paper Plate Education
"Serving the Universe on a Paper Plate"

Lunar and Planetary Institute

JORDAN











www.LetThereBeNight.com



www.LetThereBeNight.com